



INTERNATIONAL  
NUCLEAR SERVICES

[www.innuserv.com](http://www.innuserv.com)

# Design, Licensing and Transport

Secure material  
containment  
It's in our heritage.



PROUD OF OUR  
BRITISH  
HERITAGE

**INS HAS UNIQUE EXPERIENCE IN SPECIALIST NUCLEAR TRANSPORTS, PROVIDING END-TO-END SOLUTIONS TO COMPLEX CHALLENGES, INCLUDING DESIGNING AND LICENSING TRANSPORT PACKAGES.**

**DELIVERING FOR OUR CUSTOMERS**

INS is the solution to your specialist nuclear transport challenges, from package design and analysis, licensing, to transport operations - and all supported by the global reach of our in-house emergency response team.

Understanding and analysing the full scope of your transport requirements up front is essential to being able to devise the right solutions for what are often unique challenges.

Regulatory, technical and stakeholder complexities are inherent in specialist nuclear transports and no two projects are ever the same. Therefore, INS's transport process is designed to invest time with the customer up front to gain a complete understanding of what the challenges are, so they can be unpicked and overcome one by one.

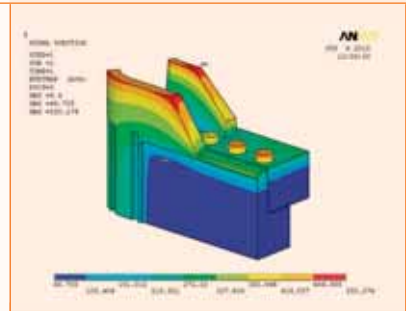
This can be achieved by building an end-to-end transport solution, or by delivering components of a transport strategy, such as designing and engineering a new transport package.

- We design complete end-to-end transport solutions, including engineering bespoke transport packages to meet your needs
- We bring to you the benefits of our expert ongoing contribution to IAEA regulations to ensure your transport is efficient and compliant
- Working with INS gives you access to 40 years of transport experience coupled with the latest operational insight

**Design and analysis**



- Consultancy - technical, criticality, shielding and fuel integrity
- Finite element analysis - thermal stress, heat transfer, vibration, impact analysis and fatigue assessment
- Infrastructure assessment design and optioneering - rail wagons, packages and lifting beams
- Maintenance of transport assets



**Package licensing**



- Package self certification to Type A
- Package design to Type B
- Package licensing and logistical support
- Package supply



**Transport operations**



- National and international transport of all radioactive materials, including Mox, by ship, rail, road and air
- Route feasibility and security assessments
- Operation of INF-class ships
- 24-hour emergency response capability with global reach and resources



**INTERNATIONAL NUCLEAR SERVICES**

[www.innuserv.com](http://www.innuserv.com)